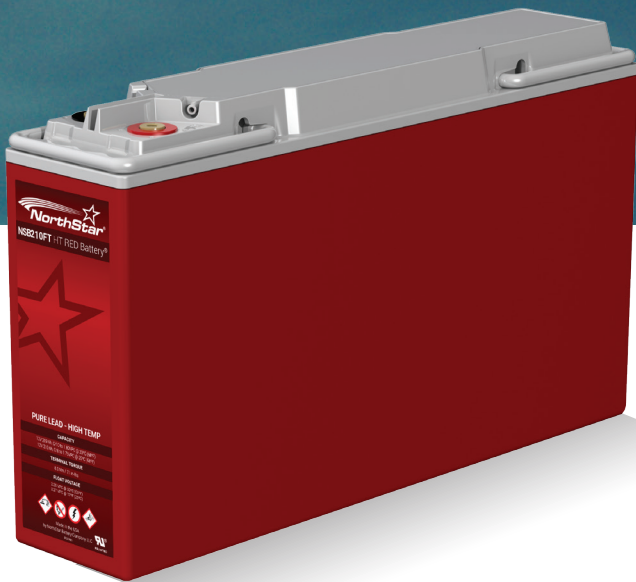


NSB HT RED Battery®

Pure Lead - High Temp



NSB HT RED Battery® delivers long life in unreliable grid conditions even at high temperatures.

99.9%
PURE LEAD

15+ YRS
DESIGN LIFE

PROUDLY
MADE IN THE
USA



The NSB HT RED Battery[®] is ideal for use in a range of applications, including telecom backup, cable TV, emergency lighting, railway, oil and gas and more.

- Pure lead electrochemistry greatly increases temp and corrosion resistance, while reducing component aging
- Thin plates deliver large surface area, high power density and low resistance
- Design life 15+ years at 20°C (68°F)
- Extra long life at high temp operation 40°C (104°F)
- EUROBAT design life definition: Very Long Life (12+ years)
- High cyclic performance
- Fast recharging
- Shelf life of up to 24 months
- Operating temperature range -40°C to +65°C (-40°F to 149°F)
- State-of-the-art automated manufacturing ensures consistency and reliability
- Advanced 3 stage terminal design to ensure leak-free operation - brass terminals provide maximum performance
- High modulus Polyphenylene Oxide (PPO) plastic materials designed to withstand extended elevated operating temperatures and maintain high battery compression essential for reliable operation
 - Non-halogenated, thermally sealed plastic casing
 - Flame retardant (UL 94 VO) and LOI of at least 28%
- Approved as non-hazardous cargo for ground, sea, and air transport - DOT 49CFR173.159(d), (i) and (ii)



NSB 90TT HT RED



NSB 125TT HT RED

Height	213 mm (8.4 in)	275 mm (10.8 in)
Width	173 mm (6.8 in)	173 mm (6.8 in)
Length	341 mm (13.4 in)	345 mm (13.6 in)
Weight	34 kg (76 lbs)	44 kg (97 lbs)
Terminal Torque	8.0 Nm (71 in-lbs)	8.0 Nm (71 in-lbs)
1 hr capacity to 1.70 VPC*	74 / 77 Ah	96 / 100 Ah
3 hr capacity to 1.75 VPC*	86 / 89 Ah	114 / 117 Ah
8 hr capacity to 1.75 VPC*	94 / 96 Ah	125 / 127 Ah
10 hr capacity to 1.80 VPC*	96 / 97 Ah	127 / 129 Ah
Float voltage*	2.28 / 2.27 VPC	2.28 / 2.27 VPC
Impedance (1KHz)	2.8 mΩ	2.6 mΩ
Conductance	1,803 S	2,065 S
Short circuit current	3,600 A	5,000 A
Nominal voltage	12 V	12 V

* Capacities and float voltages given at 20°C (68°F) and 25°C (77°F)



NSB 40FT HT RED

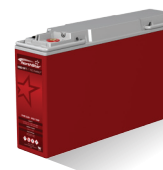
NSB 60FT HT RED

NSB 92FT HT RED

NSB 100FT HT RED

NSB 110FT HT RED

Height	208 mm (8.2 in)	263 mm (10.4 in)	264 mm (10.4 in)	287 mm (11.3 in)	227 mm (8.9 in)
Width	97 mm (3.8 in)	108 mm (4.2 in)	108 mm (4.2 in)	108 mm (4.2 in)	125 mm (4.9 in)
Length	250 mm (9.8 in)	287 mm (11.3 in)	396 mm (15.6 in)	396 mm (15.6 in)	560 mm (22.0 in)
Weight	14 kg (31 lbs)	21 kg (45 lbs)	30 kg (66 lbs)	33 kg (72 lbs)	39 kg (86 lbs)
Terminal Torque	8.0 Nm (71 in-lbs)	8.0 Nm (71 in-lbs)	8.0 Nm (71 in-lbs)	8.0 Nm (71 in-lbs)	8.0 Nm (71 in-lbs)
1 hr capacity to 1.70 VPC*	29 / 30 Ah	44 / 46 Ah	67 / 70 Ah	77 / 81 Ah	82 / 85 Ah
3 hr capacity to 1.75 VPC*	34 / 35 Ah	51 / 52 Ah	79 / 82 Ah	89 / 92 Ah	97 / 99 Ah
8 hr capacity to 1.75 VPC*	39 / 39 Ah	58 / 59 Ah	90 / 91 Ah	98 / 100 Ah	107 / 109 Ah
10 hr capacity to 1.80 VPC*	40 / 40 Ah	59 / 60 Ah	91 / 92 Ah	99 / 100 Ah	109 / 110 Ah
Float voltage*	2.28 / 2.27 VPC	2.28 / 2.27 VPC	2.28 / 2.27 VPC	2.28 / 2.27 VPC	2.28 / 2.27 VPC
Impedance (1KHz)	5.2 mΩ	4.3 mΩ	3.2 mΩ	3.9 mΩ	2.7 mΩ
Conductance	840 S	1,102 S	1,560 S	1,298 S	1,724 S
Short circuit current	1,500 A	2,100 A	3,200 A	3,500 A	3,800 A
Nominal voltage	12 V	12 V	12 V	12 V	12 V



NSB 145FT HT RED

NSB 155FT HT RED

NSB 170FT HT RED

NSB 190FT HT RED

NSB 210FT HT RED

Height	253 mm (9.96 in)	280 mm (11.0 in)	320 mm (12.6 in)	320 mm (12.6 in)	328 mm (12.9 in)
Width	160 mm (6.29 in)	125 mm (4.9 in)	125 mm (4.9 in)	125 mm (4.9 in)	126 mm (4.96 in)
Length	427 mm (16.8 in)	560 mm (22.0 in)	560 mm (22.0 in)	560 mm (22.0 in)	560 mm (22.0 in)
Weight	45 Kg (99 lbs)	53 kg (117 lbs)	55 kg (121 lbs)	60 kg (132 lbs)	66 kg (145 lbs)
Terminal Torque	8.0 Nm (71 in-lbs)	8.0 Nm (71 in-lbs)	8.0 Nm (71 in-lbs)	8.0 Nm (71 in-lbs)	8.0 Nm (71 in-lbs)
1 hr capacity to 1.70 VPC*	106 / 111 Ah	114 / 119 Ah	126 / 131 Ah	140 / 146 Ah	150 / 156 Ah
3 hr capacity to 1.75 VPC*	123 / 127 Ah	131 / 135 Ah	156 / 160 Ah	167 / 172 Ah	184 / 189 Ah
8 hr capacity to 1.75 VPC*	136 / 138 Ah	148 / 150 Ah	171 / 174 Ah	185 / 188 Ah	207 / 210 Ah
10 hr capacity to 1.80 VPC*	137 / 139 Ah	151 / 154 Ah	172 / 174 Ah	187 / 190 Ah	209 / 212 Ah
Float voltage*	2.28 / 2.27 VPC	2.28 / 2.27 VPC	2.28 / 2.27 VPC	2.28 / 2.27 VPC	2.28 / 2.27 VPC
Impedance (1KHz)	2.5 mΩ	2.4 mΩ	2.6 mΩ	2.3 mΩ	2.6 mΩ
Conductance	2,066 S	2,185 S	1,985 S	2,366 S	2,102 S
Short circuit current	3,940 A	5,000 A	6,000 A	6,000 A	>6,000 A
Nominal voltage	12 V	12 V	12 V	12 V	12 V

* Capacities and float voltages given at 20°C (68°F) and 25°C (77°F)