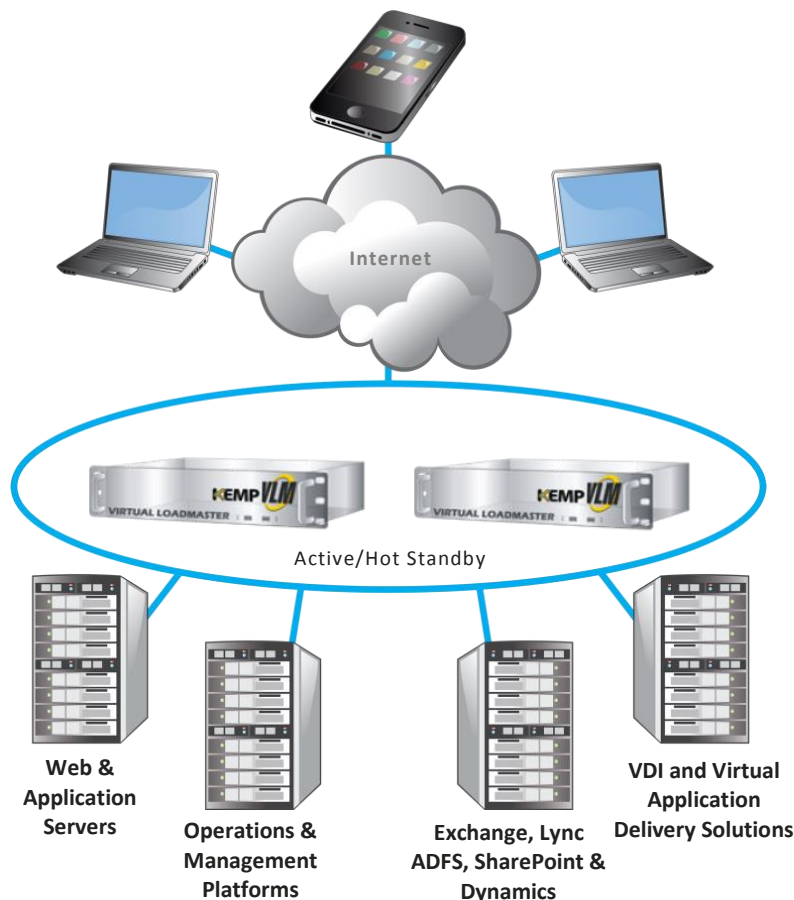


- ◆ Application Delivery Optimization
- ◆ Server Load Balancing
- ◆ SSL Termination



#1 Load Balancer
in price/performance



What is the Virtual LoadMaster™ ?

The Virtual LoadMaster™ is an **advanced Layer 4-7 load balancing and content switching application delivery controller**. Flexible deployment options on a wide array of hypervisor and cloud platforms, advanced software optimization and Enterprise application integration allows the Virtual LoadMaster™ to intelligently and efficiently distribute user traffic and make applications perform better in private and hybrid cloud deployments.

The Virtual LoadMaster™ is an **essential component** to include **for the high availability** of critical application infrastructures in virtualized and cloud environments.

The latest advancements in Layer 4-7 application delivery technology along with continued platform support expansion makes the **Virtual LoadMaster™ THE load balancer of choice** for providing high availability services in web, application and cloud infrastructures.

Load balance up to 1,000 servers and 1,000 virtual clusters per Virtual LoadMaster™



Investment Protection	Cost Containment	Ease of Use
<ul style="list-style-type: none"> ▪ A single Virtual LoadMaster™ can support up to 1,000 servers, offering scalability for growing environments. ▪ Time-tested software optimized to take advantage of the underlying hypervisor platform ensures reliability and highly available access to business critical applications. ▪ Advanced Application Delivery and security optimization features like content switching, caching, edge security, data compression, intrusion prevention and SSL termination provide all of the functionality needed for the modern application infrastructure. ▪ Native support for Enterprise applications such as Microsoft Exchange, Lync, SharePoint, RDS and the VMware Horizon suite makes LoadMaster™ the load balancer of choice for critical applications. 	<ul style="list-style-type: none"> ▪ With competitive pricing and unbeatable performance to cost ratio, the Virtual LoadMaster™ allows for shortened realization of ROI and is a clear leader in the application delivery market. ▪ Comprehensive product maintenance and support included for the first year with every LoadMaster™ lowers the cost of acquisition and TCO. ▪ Key functionality included in every Virtual LoadMaster's base price provides the most comprehensive feature set in the industry – further lowering TCO. ▪ With low overhead for training, administration and setup, Virtual LoadMaster allows for the quickest time to market for line of business and corporate-wide applications and web services. 	<ul style="list-style-type: none"> ▪ All LoadMasters come with an intuitive and simple to use Web User Interface (WUI) and CLI, enabling administrators to easily configure, maintain and integrate LoadMaster™. ▪ Wizard-driven setup and optimized configuration templates allows LoadMaster™ to be easily deployed in existing traditional datacenter and hybrid cloud infrastructures without the need for complex and time consuming implementation and reconfiguration of the environment. ▪ Secure SSH and HTTPS WUI remote access, real time performance and availability metrics, SNMP support and REST API allows LoadMaster™ and the applications it supports to be easily managed and monitored to ensure the health and performance of the environment.

Virtual LoadMaster Model	VLM-200	VLM-2000	VLM-5000	Free VLM for Azure
Pricing (Includes 1st Year Support)*	\$1,990	\$4,990	\$14,990	<i>Additional License Options Available</i>
Hypervisors & Cloud Platforms Supported				
Windows Azure	✓	✓	✓	✓
Amazon Web Services (AWS)	✓	✓	✓	
VMware, Hyper-V, KVM, Xen, Oracle VirtualBox	✓	✓	✓	
Specifications				
Balancer Throughput License †	Up to 200 Mbps	Up to 2 Gbps	Up to 5 Gbps	N/A
SSL TPS License †	Up to 200	Up to 1,000	Up to 10,000	Up to 100
Layer 4 concurrent connections ‡	3,000,000	3,000,000	3,000,000	N/A
Max Servers Supported / Virtual Clusters	1000/256	1000/1000	1000/1000	1000/500
TMG Replacement (SSO, Pre-Authentication, Security Logging)	✓	✓	✓	✓
GSLB Multi-Site Load Balancing §	✓	✓	✓	✓
All LoadMasters Feature the Following Key Features and Benefits				
Key Features	Key Supported Applications	Key Supported Microsoft Workloads		
Layer4/7 Load Balancing	VMware Horizon Suite	Exchange 2010 / 2013		
Content Switching	Virtual Desktop Infrastructure	Lync 2010 / 2013		
Caching, compression Engine	CRM Systems	Remote Desktop Services		
MS Exchange 2010/2013 Optimized	Apache Server	Sharepoint		
Pre-configured virtual service templates	Oracle E-Business Suite	Dynamics		
IPS Engine	Oracle WebLogic	Office Web Apps		
High Availability	IBM Websphere	Azure-Hosted Workloads		
TMG Replacement Included	Mobile Device Management	ADFS		
GSLB Multi-Site Load Balancing	Unified Communications	IIS		
RESTful API	Intranet Applications	Custom .Net Applications		
* USD-based MSRP Includes SW maintenance/updates and 5x10 phone/e-mail support. Remote deployment & 24x7 support options available.				
† Specifications are maximum licensed values				
‡ As tested with 1 vCPU and 1 GB memory allocated. L4 concurrent connections will scale linearly with additional allocated RAM.				
§ Available as add-on for VLM-200, 2000 and 5000. Included with VLMs for public cloud platforms.				