



**Easy Setup  
Plug N Fax**

**SUPER  
G3**



The myFAX is a complete, highly economical, easy-to-use network fax server. It was designed to meet the needs of small to mid-sized businesses or workgroups, and comes with all the necessary hardware and software to allow network users to send and receive faxes from the desktop or browser.

myFAX is a turnkey solution that connects to PSTN fax lines. It provides both software and web management interface, and allows you to receive faxes wherever you are as e-mails and send faxes from any application that can print. The system provides distributed faxing capabilities, over a WAN, from a corporate office to small remote offices as well as to field sales people. By S series myFAX V.34 Network Fax Server, it offers V.34/33.6K Super G3 fax and JBIG fax compression, reduces fax transmission time by more than half when compared to traditional fax modems. The result is faster fax transmissions and significant cost savings over time.

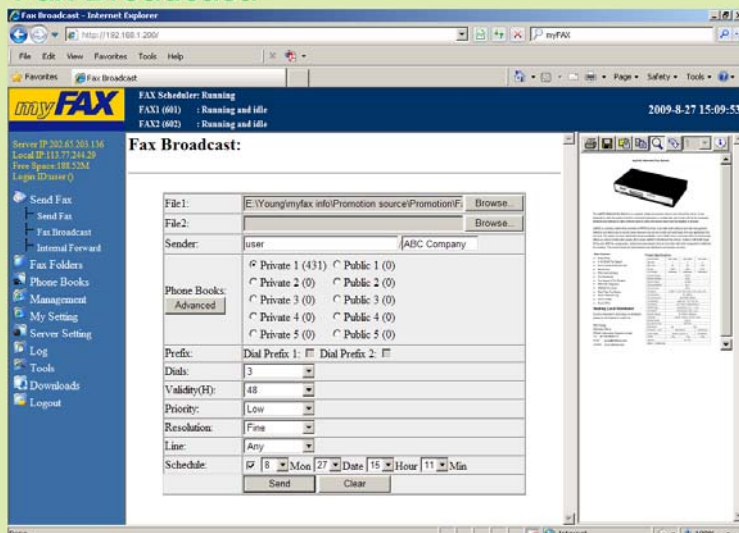
# myFAX V.34 Network Fax Server Main Functions:



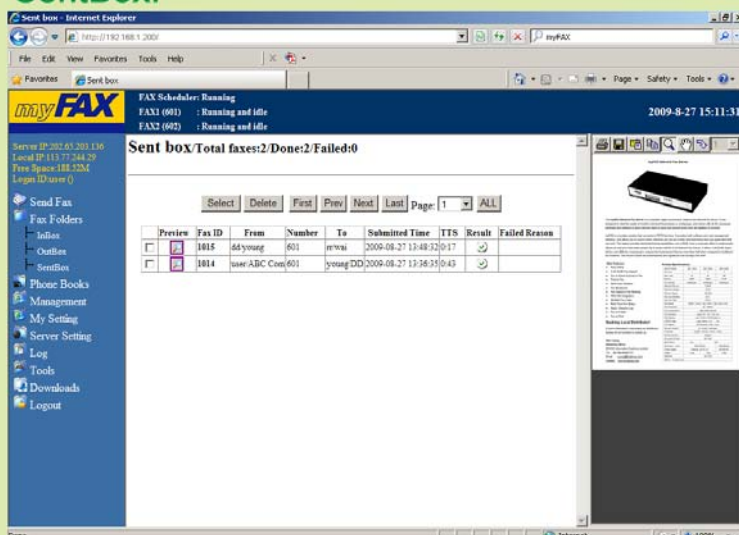
## Send and Receive Fax

- Automatic Format Conversion**  
 The user can send fax by select myFAX printer to convert the current document to fax format.
- Fax Queue**  
 All faxes will be queued within myFAX fax queue. It has priority code to indicate the priority of the fax. Urgent fax will send out by next available line.
- Delay Fax Sent**  
 Users can send faxes by specified time.
- V.34/ 33.6kbps Fax Speed \***  
 With speeds capable of 33.6kbps and JBIG compression that transmission faxes faster.
- Fax Broadcast**  
 Users may also be able to send the fax document to a number of different users. Fax Broadcast result can export to Excel format.
- Fax Resend**  
 When the fax destination is busy or no answer, myFAX will queue for resend. Users can set up the retry times in the software.
- Inbound Fax Routing**  
 myFAX will route the fax according to sender's input of the fax mailbox number and automatically route to users mailbox.
- Internal Transfer**  
 All faxes can be transfer internally. Just select the user's name on the list.
- Fax Status**  
 The system automatically indicate real time fax status on top of web interface. It helps user to identify the fax line situation.
- Fax to Email**  
 All received fax will be automatically send to user's folder. It also can setup to send to email account by attachment with TIFF or PDF format.
- Email to Fax**  
 User can send fax from anywhere with internet connection. Just add the attachment to email and our fax server will automatically converts your email into fax and forwards it to the destination fax machine.
- Fax to Print**  
 All received faxes can be printed out automatically.
- Fax to Folder**  
 The sent and received faxes will be stored in any share folder specified by user.

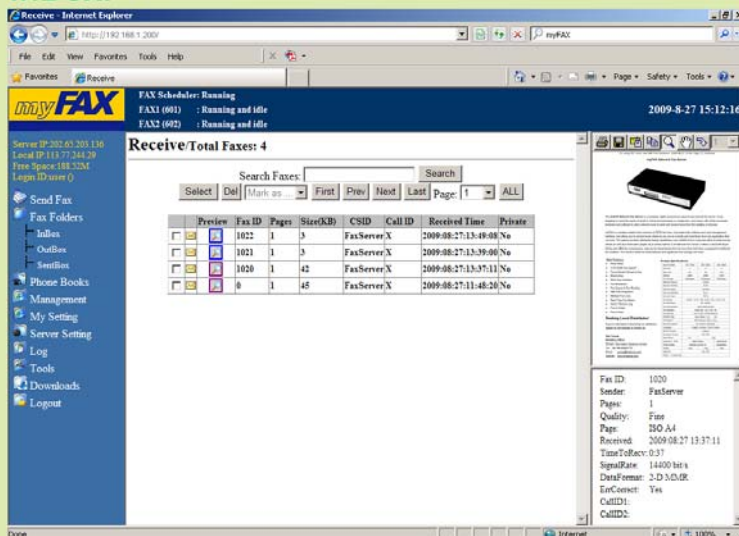
## Fax Broadcast:



## SentBox:



## InBox:



# myFAX V.34 Network Fax Server Main Functions:



## Print2Fax

myFAX allows users to compose a fax from any application that utilizes a printer. To send, users simply "print" the document to the application. Let sending fax is easy as printing.

## Print2Fax Interface:

**Configure FAX Client V2.0**  
Network Fax Server, Powered by EDVAC

FAX Server Address: 192.168.0.200  
Line: Any  
Ignore PASV IP address:   
Page Size: A4  
Username: user  
Resolution: Fine  
Password: \*\*\*\*\*  
Max Dials: 1  
Sender: username  
Max Tries: 1  
Advertising: print2fax  
Priority: Normal  
Address Book Format: Two Text Files  
Validity: 3 hours  
Address Book Directory: c:\fff  
Job Confirm:   
Operating System: XP/2000

OK Cancel

**Send FAX**  
Document: Untitled - f

FAX Number: 123456  
Save Number  
Select from AddressBook  
Delete Entry  
Sender: username  
Line: Any  
Resolution: Fine  
Priority: Normal

Send Cancel Time To Cancel: 109

## Email to Fax:

Validation code,Account,Sender,Receiver@fax Numver

To: myfax@test.com  
Cc:  
Subject: Validation code,Account,Sender,Receiver@fax Numver  
Attach: Fax file.tif (7.27 KB)

Email to Fax

## System and Management

### User Management

Administrators can set up different user accounts passwords, management authority, attributes, lines, document format and email address.

### Address Book

myFAX has its own address books – both shared and private to each user. Contacts may be grouped together into fax lists for rapid dissemination of information using just a few clicks.

### Fax Monitoring

Administrators can monitor all incoming or outgoing faxes.

### System Log

myFAX provides various system log for administrator. Included user login and modify log, fax sent log, received fax log, fax distribution log and internal transmit log. All logs can export to excel format.

## User Management:

User Management - Users: 14

Basic: Name: user, Department: Default, Login ID: user, Password: \*\*\*\*\*  
SMTP: Default SMTP: (Use admin's setting), SMTP Server: mail.test.com, Account: admin@test.com, Password: \*\*\*\*\*  
Fac2Folder: Default Fac2Folder: (Use admin's setting), Sub Directory: , Next IP: , Account: , Password: , Format: , Fac2Folder: , NotifyByFolder: , Fac2Folder: , Printer: , Fac2Print: , NotifyByPrint:

Select	Name	Login ID	Department	Ext	Line	Server Setting	Fax Manager	Admins	Default SMTP	Fac2 Email	Notify	Default Fac2Folder	Fax2Print
<input type="checkbox"/>	admin	admin	Default	NA	Custom	Yes	Yes	No	No	No	No	No	No

## Sent Log:

Sent Log Total faxes: 7 / Done: 7 / Failed: 0

FaxID	Account	Sender	Recipient	Number	CSD	Line	Pages	Speed	Format	Quality	Submitted Time	Sent Time	ETS	Comid	Result
1013	user	dsyoung	rtwai	601	FaxServer:FAX2	14400	2	hit	2-D	Normal	2009-08-27 13:48:32	2009-08-27 13:49:16	0:17	000000019	Done
1014	user	user:ABC Com:young	DD	601	FaxServer:FAX2	14400	2	hit	2-D	Normal	2009-08-27 13:36:59	2009-08-27 13:37:44	0:43	000000018	Done
1013	msml	msml	aproms	+673226188	FaxServer:FAX2	14400	2	hit	2-D	Normal	2009-08-27 09:48:29	2009-08-27 09:52:44	0:46	000000014	Done
1012	msml	msml	aproms	00673226188	FaxServer:FAX2	14400	2	hit	2-D	Normal	2009-08-27 08:28:08	2009-08-27 08:30:26	0:47	000000013	Done
1011	young	msdyj	sa'vw	601	FaxServer:FAX2	14400	2	hit	2-D	Normal	2009-08-27 11:53:52	2009-08-27 11:54:37	0:17	000000029	Done
1010	young	EDVAC:Young	Test:RDGE	601	FaxServer:FAX2	14400	2	hit	2-D	Normal	2009-08-27 14:17:19	2009-08-27 14:18:28	0:43	000000027	Done
1009	thomas	EDVAC:FAX	EDVAC:TEST	602	FaxServer:FAX2	14400	2	hit	2-D	Normal	2009-08-27 10:24:10	2009-08-27 10:25:23	0:39	000000021	Done

### Introduction to V.34 High-Speed Fax

Dubbed "V.Fast", the V.34 fax standard is heralded as an important development in fax technology. Fax devices supporting the V.34 protocol also can deliver more reliable fax transmission, requiring fewer resends, under a wider range of line conditions than those supporting older fax standards such as V.17 and 9.6 kbps.

The adoption of the V.34 standard allows:

- Data rate of up to 33.6Kbps, more than twice the speed of its predecessor, V.17 (14.4Kbps)
- Support fast handshaking, which can cut call setup and session-management time by one-third.
- High-speed transmission enables transport of color fax data

### What is the ITU-T V.34 Fax Standard

The V.34 fax standard was derived from the V.34 data modem standard established by the International Telecommunications Union (ITU). The V.34 data modem standard is a full-duplex implementation for sending and receiving data across telephone lines with a maximum data rate of 33.6Kbps. Certain elements of the V.34 data modem standard were eliminated for V.34 fax while new features, such as a control channel and mandatory ECM, were added to enable fast and reliable fax transmission.

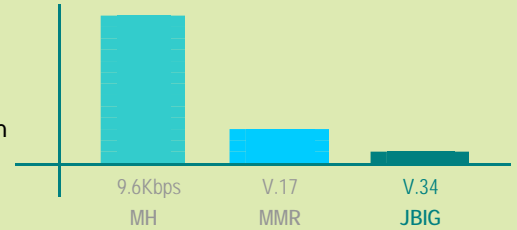
Data Rates Supported (Kbps)	ITU Standard		
	V.27&V.29	V.17	V.34
2.4	✓		✓
4.8	✓		✓
7.2	✓	✓	✓
9.6	✓	✓	✓
12		✓	✓
14.4		✓	✓
16.8			✓
19.2			✓
21.6			✓
24			✓
26.4			✓
28.8			✓
31.2			✓
33.6			✓

Comparison between Fax Modulation Speeds  
Source [www.gaoresearch.com](http://www.gaoresearch.com)

### JBIG Compression

JBIG is the most effective compression (up to 80% better), and an average document when compressed using JBIG becomes 1/20th of the original size. The main features of JBIG are:

- Lossless compression of one-bit-per-pixel image data.
- Ability to encode individual bitplanes of multiple-bit pixels.
- Progressive or sequential encoding of image data.



Relative transmission times  
(compression effect varies on content type)  
Source [www.mainpine.com](http://www.mainpine.com)

### Transmission times

The table below shows the time it takes to transmit a 4 page fax using 9.6k, v.17 and V.34 Super G3. These figures account for the connection, transmission and retraining times.

In seconds	9.6 kbps	V.17	V.34
Handshake	16	16	7
Page 1 (3%)	18	12	5
Retraining	6	6	0.25
Page 2 (6%)	27	18	7
Retraining	6	6	0.25
Page 3 (6%)	27	18	7
Retraining	6	6	0.25
Page 4 (12%)	54	36	14
Retraining	6	6	0.25
<b>TOTAL</b>	<b>166 seconds</b>	<b>124 seconds</b>	<b>41 seconds</b>

Average Fax Transmission Times (4-Page Fax)  
Source [www.brooktrout.com](http://www.brooktrout.com)

For the fax being sent using V.34, once the handshaking is completed, the first page is transmitted at 33.6 Kbps. This means that the first page of a typical four-page fax will transmit in seven seconds, versus 16 seconds with the older technology. For the example of the four-page fax transmission, the transmission time can vary from 166 seconds with a 9.6 Kbps modem, to only 41 seconds using V.34 fax technology, saving more than two minutes per call on average.

The V.34 protocol is highly adaptive, automatically and intelligently applying the optimum combination of modulation methods and impairment-compensation techniques for each fax call. The result is faster fax transmissions and significant cost savings over time.

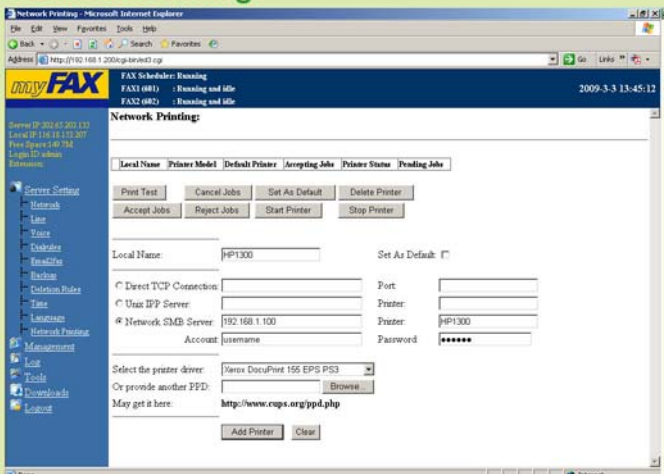
# myFAX V.34 Network Fax Server Fax Solution Experts



## Main Feature

- Easy Setup**  
 myFAX network fax server is integrated in a box. No technical skill is required to setup the server.
- Desktop Faxing**  
 myFAX network fax server allows you to deploy faxing to your entire user base so that they can send and receive faxes while sitting at their desks.
- Operate Independently**  
 System running completely out of the computer. No server side software required. Fax stored in myFAX network fax server.
- PBX Integration**  
 After installing myFAX behind PBX, It is able to listen DTMF code generated from PBX system. So fax can be delivered via PBX setting or analog DID/DDI service.
- V.34 SuperG3 Support \***  
 myFAX support V.34 SuperG3 fax enabling transmission speeds of 33.6Kbps for superior performance. Reduce costs.
- Network Fax Sharing**  
 myFAX runs in TCP/IP network. User can share faxes and files within local LAN or even internet. It save time to deliver fax and save cost as well.
- CSID Support**  
 User can identify the source of fax. It help to manage faxes more intuitive and more convenient
- Caller ID Support**  
 Route all matched CID (telephone number routing) faxes to specify the user.
- Fax Backup**  
 Fax Backup allows to store and backup the received or sent faxes to any share folder in server or PC automatically.

## Network Printing:



## Product Specifications:

myFAX Model	150 / 150S	250 / 250S	450 / 450S
Fax Line	1	2	4
Max. User	20	50	100
Memory	256M	256M	512M
Fax Storage	4000pages	4000pages	8000pages
Network Protocol	TCP/IP		
Network Interface	RJ45		
Network Speed	10/100M		
Fax Line Interface	RJ11		
Fax Line Type	PSTN		
Fax Speed	33.6k* / 14.4K / 12K / 9.6K / 7.2K / 4.8K / 2.4K		
Fax Resolution	98 / 196DPI		
Fax Compression	JBIG*, MMR, MR, MH		
Fax Standard	Super G3*, ITU-T G3 / G4		
Fax Routing	Line / CSID / Extension / Caller ID		
DID/DDI Digit	(User Define 1,2,3,.....,25)		
OS Support	MS Windows / Mac / Linux		
Browser Support	IE / Firefox / Netscape		
Language	English, Chinese, French, Arabic, Turkish		
Remote Access	Support		
Document Format	TIFF/ PDF		
Rack Mount	No	Yes	
Dimension (mm)	280X150X45		450x235x45
Power Supply	External 12V DC,1A		90-240VAC
Weight	1.8KG	2.0KG	3.7KG
Approval	CE ,FCC		

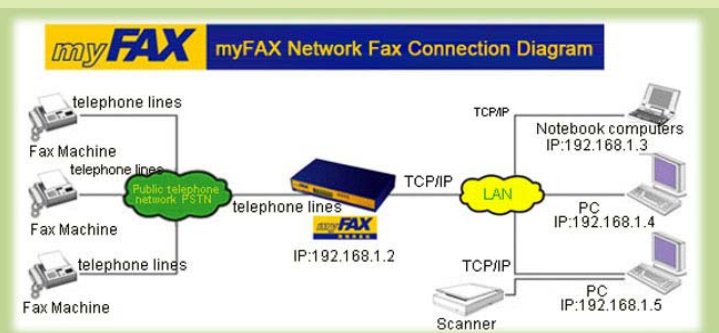
myFAX150/150S BackPanel:



myFAX250/250S BackPanel:



myFAX450/450S BackPanel:



Notice \*: S series only